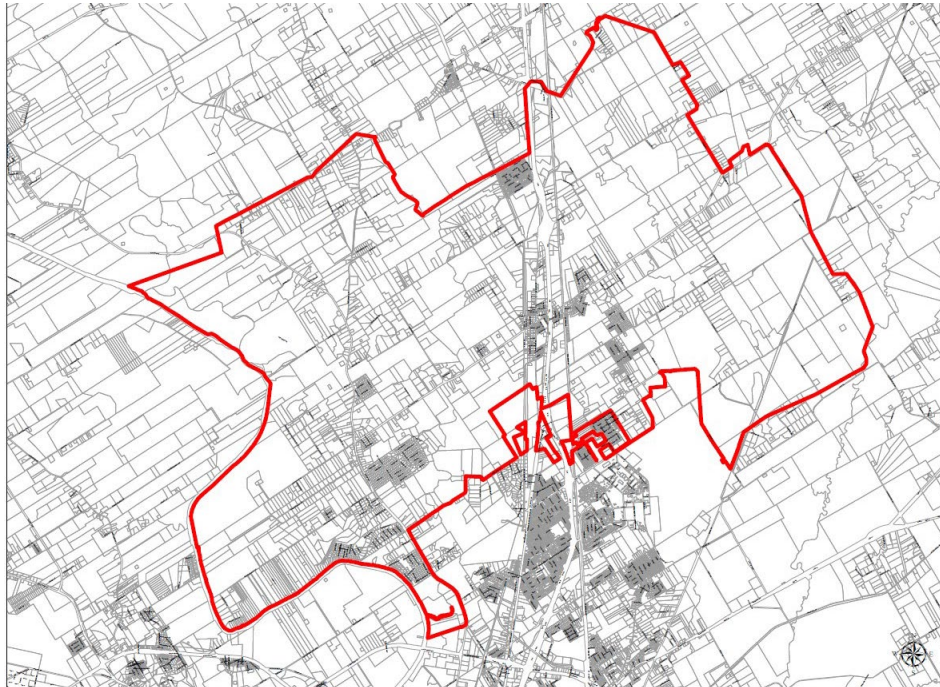


NOTICE OF PUBLIC HEARING

A public hearing will be held by and before the McLennan County Commissioners Court at **9 A.M. on Tuesday the 19th day of July, 2022** in the Commissioners Courtroom, located on the First Floor of the McLennan County Courthouse at 501 Washington Avenue, Waco, Texas concerning the proposed creation of an emergency services district under applicable law. The district is to be created and is to operate under Article III, Section 48-3 of the Texas Constitution, as proposed by S.J.R. No. 27, Acts of the 70th Legislature, Regular Session, 1987, and adopted by the voters at an election held November 3, 1987. The name of the proposed district is the MCLENNAN COUNTY EMERGENCY SERVICES DISTRICT NO. 1. The emergency services district is proposed to cover the Elm Mott, Chalk Bluff, and Lincoln City unincorporated areas, and have some overlap with the extraterritorial jurisdiction of the City of Lacy Lakeview and the City of Waco. The boundaries of the District are shown on the map below and more are fully described in the petition which can be viewed in its entirety on McLennan County's website at <https://www.co.mclennan.tx.us/418/Notices>.

All interested persons are given the right to appear and present grounds for or against the creation of the District.



**PETITION FOR CREATION OF
EMERGENCY SERVICES DISTRICT**

THE STATE OF TEXAS	§	IN THE COMMISSIONER’S COURT
	§	
	§	OF
	§	
COUNTY OF MCLENNAN	§	MCLENNAN COUNTY, TEXAS

TO THE HONORABLE COUNTY JUDGE AND COMMISSIONERS OF SAID COURT:

NOW COME 100 or more qualified voters who own taxable real property in McLennan County, Texas pursuant to Texas Health & Safety Code, Section 775.011, requesting the creation of an Emergency Services District and would respectfully show the following:

I.

That the proposed McLennan County Emergency Services District No. 1 (the “District”) will be created and operated under the provisions of Article III, Section 48-e of the Constitution of Texas and Chapter 775 of the Health & Safety Code of the State of Texas.

II.

That the name of the proposed District shall be “MCLENNAN COUNTY EMERGENCY SERVICES DISTRICT NO. 1.”

III.

That the area of the District does not overlap the boundaries of any other emergency services district, and will generally include portions of the extraterritorial jurisdictions of the City of Waco and the City of Lacy Lakeview. The boundaries of the District are more particularly described by the description attached as **Exhibit “A”**, which is attached hereto and incorporated herein for all purposes, and generally shown on the attached sketch in **Exhibit “A-1”**.

IV.

The District will provide emergency services in response to any emergency situation in accordance with the authority granted to emergency services districts under Chapter 775 of the Texas Health & Safety Code.

V.

The creation of the District complies with Section 775.0205 of the Texas Health & Safety Code.

VI.

That Casey Perry, who resides at 280 Northwood Ave., Waco, Texas 76705, and Michael Ballerino, who resides at 780 Wayside Dr., Waco, Texas 76705, (collectively, "Petitioners"), agree and obligate themselves to pay the cost incident to the formation of the District, including the costs of publishing notices, election costs, and other necessary and incidental expenses, such cost not to exceed one hundred fifty (\$150.00) dollars, to McLennan County as required by Section 775.013(b) of the Texas Health & Safety Code.

VII.

The City of Waco and the City of Lacy Lakeview are the only municipality whose consent must be obtained under Section 775.014 of the Texas Health & Safety Code.

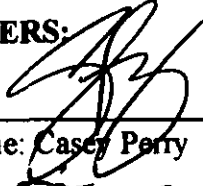
VIII.

The signatures required by the Texas Health & Safety Code, Section 775.011, for the creation of McLennan County Emergency Services District No. 1 are attached on **Exhibit "B"**.

WHEREFORE, PREMISES CONSIDERED, Petitioners pray that such notices be issued by the County Clerk of McLennan County as required by law; that a public hearing be held on this petition in the county; and that, after the hearing, the Commissioners Court of McLennan County grant this petition and call a special election regarding the creation of the District.

RESPECTFULLY SUBMITTED this _____ day of _____, 2022.

PETITIONERS:

By: 
Printed Name: Casey Perry

By: 
Printed Name: Michael Ballerino

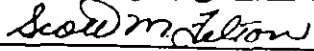
ACCEPTED BY COMMISSIONERS COURT
THIS 7 DAY OF MAR 2022

COUNTY JUDGE

Exhibit "A"

Description of Proposed McLennan County Emergency Services District No. 1

Boundary Description

Description by meets and bounds for McLennan County Emergency Service District #1

Emergency Service District #1 is made up of 4 none contiguous parts and being described as follows and shown on the map attached as Exhibit A-1:

Part 1

Beginning at a point called the north east corner of a 2 acre tract owned by Alisa Kye Johnson by deed file number 2011009124 of the McLennan County deed records.

Thence N56-9-17E a distance of 4.7' Thence N55-10-47E a distance of 14.82' Thence N57-10-5E a distance of 2.92' Thence N58-20-53E a distance of 2.08' Thence along a curve to the right radius of 122.53' for a arc distance of 185.27' cord bears S78-46-51E with a cord distance of 168.12' to a point in the west line of Mesquite Tree and the north east line of the Alisa Kye Johnson 3.896 acre tract Thence along the west line of said road S32-16-24E a distance of 34.89' Thence S32-16-17E a distance of 152.88' to a point for corner being the south east corner of the Alisa Kye Johnson 2 acre tract. Thence S32-7-6E a distance of 308.75' Thence S56-18-4W a distance of 76.59' to the north east corner of lot 1 block 1 of the Marie Addition recorded in Volume 747 page 867 of the McLennan County deed records. Thence S56-18-4W a distance of 747.04' to the north west corner of lot 10 block 1 of the Marie Addition. Thence N31-57-53W a distance of 361.96' Thence N32-2-34W a distance of 300.01' Thence S56-12-10W a distance of 553.12' Thence S32-18-20E a distance of 117' Thence S49-56-52E a distance of 44.59' Thence S32-8-28E a distance of 709.55' Thence S31-22-27E a distance of 367.04' Thence S35-59-37E a distance of 206.6' Thence S57-25-45W a distance of 40' Thence N32-34-17W a distance of 70' Thence N32-34-20W a distance of 8' Thence N37-39-40W a distance of 44.94' Thence N34-26-38W a distance of 19.75' Thence N32-9-7W a distance of 59.77' Thence N32-11-49W a distance of 420.83' Thence N32-45-44W a distance of 429.27' Thence N31-13-2W a distance of 140.04' Thence N34-19-50W a distance of 90.13' Thence N53-11-1W a distance of 46.01' Thence N32-17-59W a distance of 117' Thence N57-21-04W a distance of 463.108' Thence N32-38-45W a distance of 206.99' Thence N57-41-7E a distance of 428.5' Thence N33-29-56W a distance of 176.52' Thence N57-46-59E a distance of 966.65' Thence S32-54-9E a distance of 158.73' to a point in the start of a curve to the left with a radius of 421.97' arc distance of 139.69' Cord Bears S45-31-42E for a cord distance of 139.05' and to a point of the start of another curve to the left with a radius of 189.49' and an arc distance of 154.7' cord bears S81-29-53E for a cord distance of 150.44. Thence N61-43-6E for a distance of 66.381' Thence N57-47-48E for a distance of 58.21' to the point of beginning.

Part 2

Beginning at a point called the south west corner of the World Hunger Relief Inc 15.86 acre tract also said point being in the north east line of a road called Spring Lake for the beginning point of the herein described tract. Thence N22-11-11W for a distance of 1294.8' Thence N66-34-43E for a distance of 751.68' Thence N0-22-27E for a distance of 126.87' Thence N62-12-39W a distance

of 556.94' Thence N56-33-32E a distance of 742.78' Thence S0-30-10W a distance of 1226.03' Thence N87-20-27E a distance of 123.54' Thence S0-19-24W a distance of 783.36' Thence S56-25-54W a distance of 524.43' to the point of beginning.

Part 3

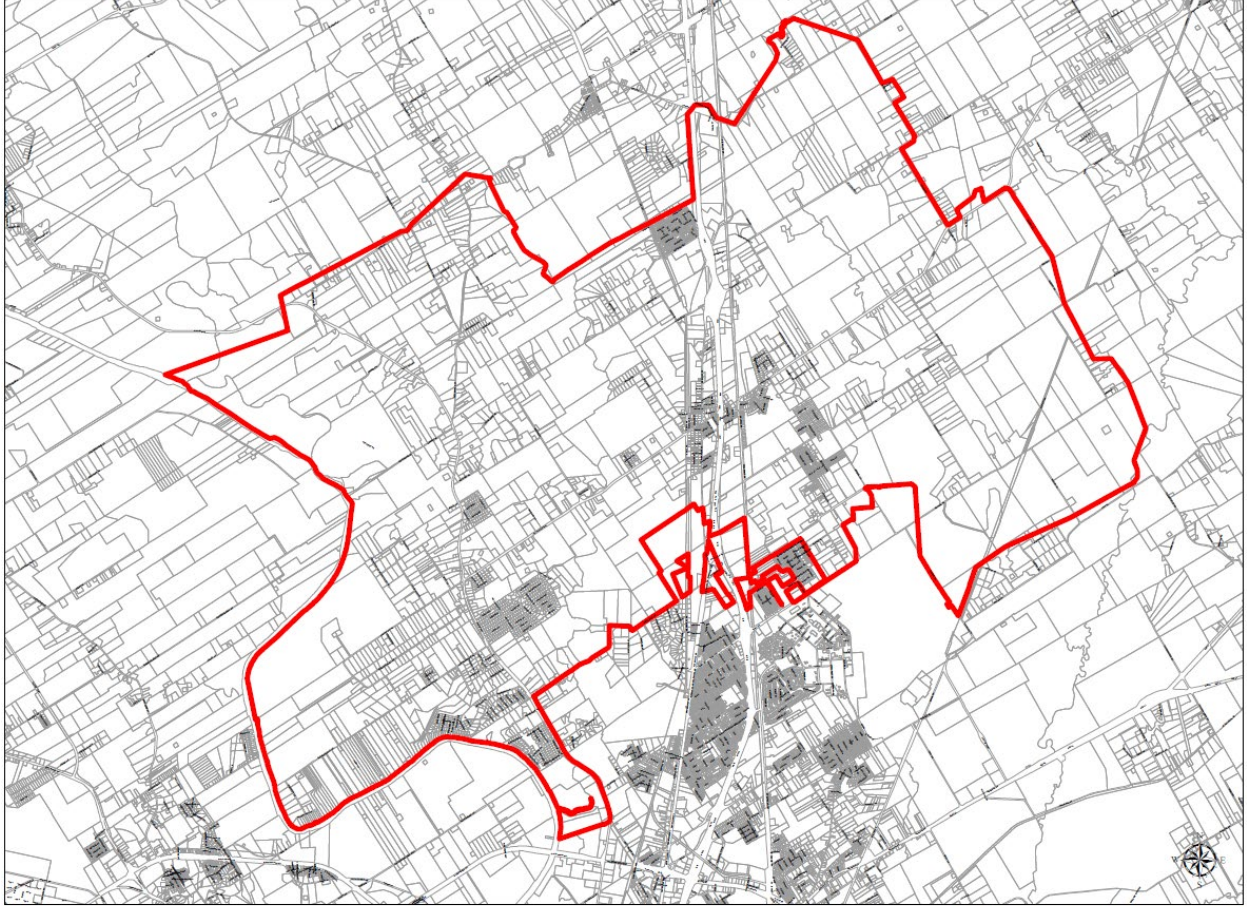
Beginning at a point Thence S23-20-3E a distance of 1789.69' Thence S57-4-14W a distance of 180.21' Thence N32-25-1W for a distance of 81' Thence S57-53-49W a distance of 191.22' Thence S31-31-42E for a distance of 1253.03' thence N58-38-36E a distance of 48.37' Thence S33-31-47E a distance of 511.4' Thence S58-50-34W a distance of 510.84' Thence N33-38-32W a distance of 1160.56' Thence S76-11-47W a distance of 619.18' Thence N7-50-26E a distance of 451.5' Thence N6-39-41E a distance of 446.66' thence N5-24-0E for a distance of 708.70' Thence N3-26-14W for a distance of 361.99' Thence N68-44-56E for a distance of 73.5' Thence N29-21-53E a distance of 77.32' N-37-22E a distance of 643.4' to the point of beginning.

Part 4

Thence S71-37-23E a distance of 3372.32' Thence S32-5-57E a distance of 2752.79' Thence N68-52-40E a distance of 579.7' Thence S32-10-48E a distance of 1117.93' Thence S59-19-45W a distance of 570.35' Thence S31-31-44E a distance of 2034.12' Thence S7-51-53W a distance of 281.37' Thence S57-50-38W a distance of 782.27' Thence S31-10-48E a distance of 4674.31' Thence N56-59-21E a distance of 788.15' Thence N25-6-37W a distance of 420.28' Thence N50-20-34E a distance of 375.91' Thence N53-44-4E a distance of 752.88' Thence N11-51-46E a distance of 320.68' Thence N69-26-56E a distance of 347.68' Thence S10-59-26E a distance of 703.82' Thence N57-9-56E a distance of 1344.02' Thence S51-8-36E a distance of 92.98' Thence N89-12-5 E a distance of 120.34' Thence S32-29-22E a distance of 1008.3' Thence S32-29-22E a distance of 3195.60' Thence S14-58-39E a distance of 2595.06' Thence S27-43-2E a distance of 3251.95' Thence N89-20-0E a distance of 924.32' Thence S35-39-31E a distance of 1504.37' Thence S21-13-22E a distance of 2628.98' Thence S20-28-53W a distance of 1808.23' Thence S21-38-11E a distance of 474.3' Thence S12-45-43E a distance of 130.39' Thence S4-20-46W a distance of 260.53' Thence S18-30-43W a distance of 110.88' Thence S37-12-28W a distance of 155.75' Thence S19- 28-23WE a distance of 75.93' Thence S61-2-17W a distance of 3846.56' Thence S65-53-33W a distance of 3752.43' Thence S55-14-14W a distance of 1889.72' Thence S19-38-34W a distance of 2699.36' Thence N33-22-17W a distance of 642.84' Thence S56-41-23W a distance of 175' Thence N33- 18-38W a distance of 200.2' Thence N56-41-21E a distance of 172.8' Thence N33-34-29W a distance of 1472.8' Thence N30- 59-50W a distance of 1418.61' Thence N4-5-25W a distance of 3622.19' Thence N50-14-32W a distance of 272.3' Thence S85-29-10W a distance of 1623' Thence S4-58-6E a distance of 38.58' Thence S85-1-47W a distance of 161.64' Thence N7-46-0W a distance of 38.62' Thence S86-41-4W a distance of 545' Thence S54-25-47W a distance of 131.35' Thence S64-59-58E a distance of 169.45' Thence S32-5-0E a distance of 366.87' Thence S3-57-28E a distance of 601.85' Thence S85-52-2W a distance of 1037.65' Thence S4-31-36E a distance of 594.35' Thence N33-49-18W a distance of 81.76' Thence S57-33-58W a distance of 614.76' Thence S28-58-14E a distance of 1383. 48' Thence S3-40-28E a distance of 689.66' Thence S56-30-7W a distance of 1894.37' Thence S56-12-6W a distance of 1292.05' Thence S55-55-39W a distance of 790.8' Thence N32-24-55W a distance of 732.9' Thence N56-38-29E a distance of 784.56' Thence S32-53-19E a distance of 665.65' Thence

N55-30-45 a distance of 1293.48' Thence N31-7-1W a distance of 1000.35' Thence N32-22-59W a distance of 1536.33' Thence S57-55-16W a distance of 1721.62' Thence S76-10-22W a distance of 67.65' Thence S57-45-54W a distance of 1117' Thence S32-4-56E a distance of 236.93' Thence S57-59-40W a distance of 316.28' Thence S4-59-33E a distance of 449.14' Thence N57-34-59E a distance of 239.26' Thence S32-14-44E a distance of 367.14' Thence S57-34-35W a distance of 440.34' Thence S65-31-51W a distance of 119.38' Thence S3-46-9E a distance of 778.18' Thence S57-53-19W a distance of 239.23' to the south west corner of that 0.576 acre tract sold to the State of Texas and recorded by file number 2011002519 in the McLennan County deed records. Said point also being in the west line of the north bound frontage road of IH35. Thence in a northerly direction along the west line of said frontage road to the north west corner of the 1.308 acre tract sold to the State of Texas in file number 2009033433 of the McLennan County deed records. Thence leaving the west line of the frontage road N80-44-19E along the south line of the 18.608 acre tract owned by PAMCO HUNT INC. recorded in file number 2011012407 for a distance of 735.21' to the east line of the M.K.&T. R.R. row. Thence north along the east line of said row going N4-22-56W for a distance of 3144.10' Thence S59-25-42W a distance of 1509.4' to a point in the west line of the north bound frontage of IH35. Thence crossing IH35, S70-23-57W a distance of 603.2' to the north east corner of the 0.816 acre tract to the State of Texas by file number 2010001094 of the McLennan County deed records. Thence N5-58-23E a distance of 658.38' Thence N2-16-49W a distance of 159.49' Thence S61-56-48W a distance of 347.41' to a point in the east line of Old Dallas Rd. Thence N4-32-9W along said east line a distance of 847.22' Thence S60-45-16W a distance of 312.32' Thence N30-41-22W a distance of 409.37' Thence S56-8-13W a distance of 325.755' Thence S52-1-6W a distance of 173.36' Thence S56-7-59W a distance of 2854.44' Thence S32-51-45E a distance of 1967.6' Thence S56-1-57W a distance of 160.7' Thence S32-39-55E a distance of 1733.5' Thence S56-34-19W a distance of 2100.19' Thence S53-58-51W a distance of 626.6' Thence S63-59-6W a distance of 70' Thence S85-17-29W a distance of 26.64' Thence N62-3-25W a distance of 19.42' Thence N42-40-55W a distance of 39.3' Thence N17-58-9W a distance of 87.83' Thence N10-19-15W a distance of 73.98' Thence N60-24-45W a distance of 55.74' Thence N87-36-35W a distance of 1052.67' Thence S0-11-35W a distance of 1067.34' Thence S11-51-37W a distance of 73.98' Thence S56-54-50W a distance of 63.65' Thence S57-51-59W a distance of 861.79' Thence S59-54-14W a distance of 84.73' Thence S43-42-55W a distance of 263.85' Thence S72-33-36W a distance of 305.9' Thence S63-9-21W a distance of 263.76' Thence S55-26-39W a distance of 2914.33' to a point in the center of Gholson Rd. Thence south along the center of Gholson Rd to a point in the center of Gholson Rd at its intersection of a projected line being the south line of Cargill Meat Solutions 35.538 acre tract for corner. Thence S52-41-11W a distance of 61.52 to the south east corner of the said 35.538 acre tract. Thence continue along the south line of the Cargill 35.538 acre tract the following calls S60-25-39W a distance of 330.29' Thence N39-34-35W a distance of 46.53' Thence N38-44-1W a distance of 1.55' Thence S71-18-57W a distance of 99.14' Thence S71-18-59W a distance of 1442.76' Thence S71-24-34W a distance of 194.65' Thence S71-27-49W a distance of 687.71' to the south west corner of the Cargill 35.538 acre tract said point being in the east bank of the Brazos River. Thence in a north westerly direction along the east bank of the Brazos River to a point being the south west corner of the Susan Ballew Ashcraft 133.884 acre tract described in deed file number 2005042959 of the McLennan County deed records for the north west corner of the herein described tract. Thence N70-3-59E along the said south line for a distance of 6831.9' Thence N11-58-40E a distance of 1886.13' Thence N62-10-6E a distance of 7193.95' Thence N84-9-39E a distance of 306' Thence N35-36-42E a distance of 454' Thence N46-53-59E a distance of 3818.5' to the point of beginning.

**Exhibit A-1
Map of Proposed
McLennan County Emergency Services District No. 1**



McLennan County Emergency District 1

Exhibit "B"

Real Property Owners Qualified to Vote in McLennan County for Proposed McLennan County Emergency Services District No. 1

Owner Name(s) (printed)	Residence Address	Mailing Address	Date of Birth	Voter Registration Number	County of Registration	Owner Signature	Date